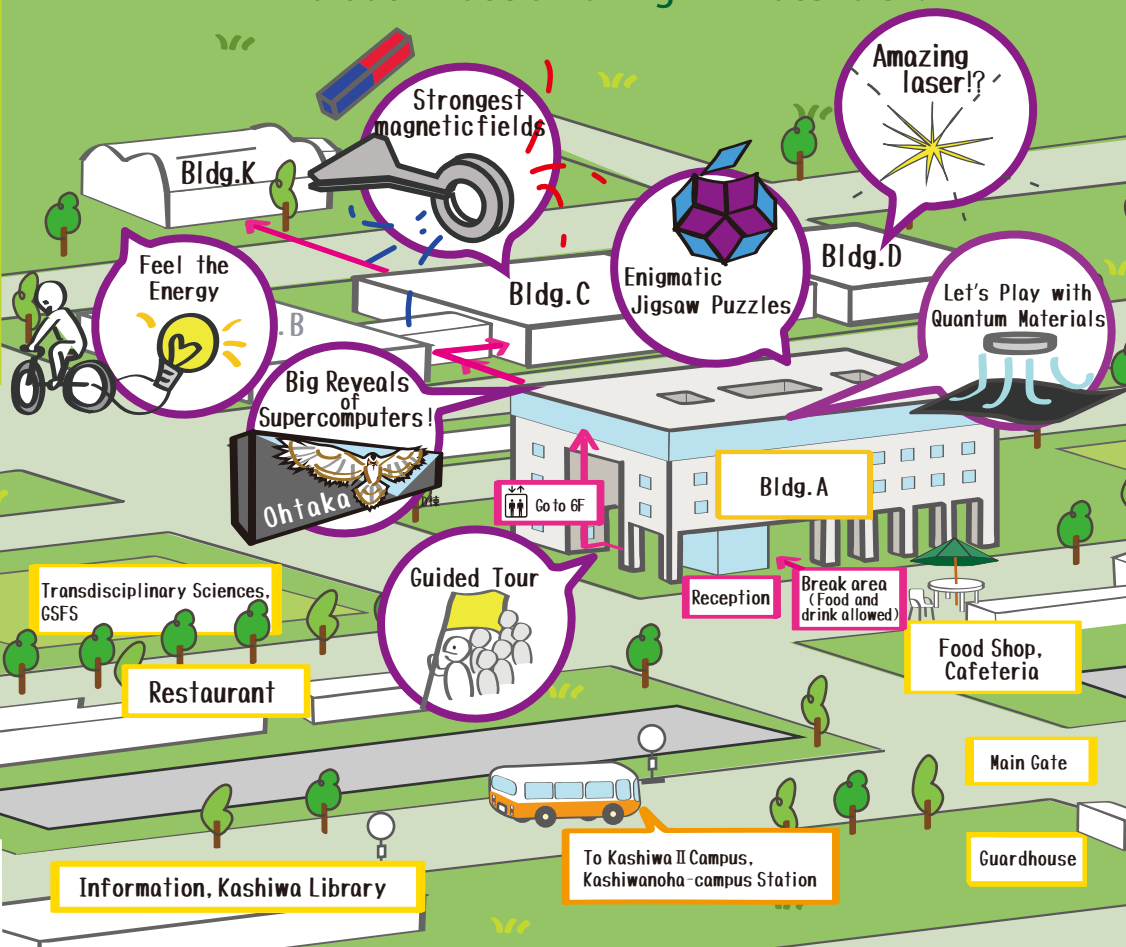


Open House 2024

ISSSP Guide Map

10/25 (FRI) - 26 (SAT) 10:00-16:30

Find out what's amazing in "materials"!



東京大学 物性研究所
THE INSTITUTE FOR SOLID STATE PHYSICS
THE UNIVERSITY OF TOKYO

Exhibition

Recommended route

Start (Reception)

The world of ultra high pressure

Worlds' strongest magnetic fields

Light and Laser

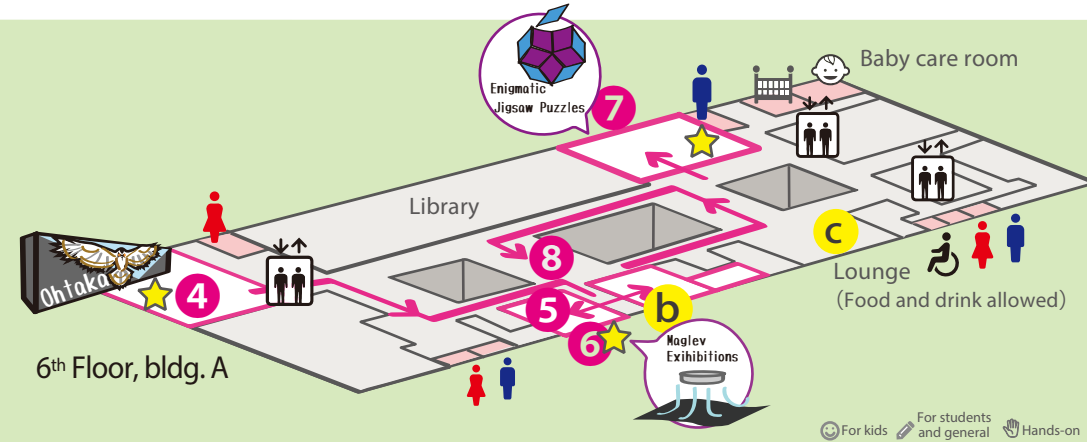
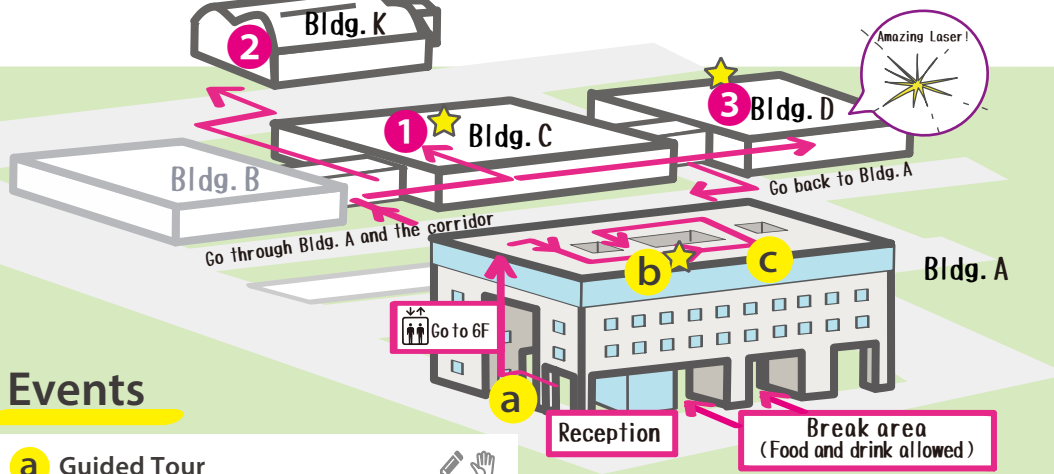
Goal/Prize exchange

"Busseiken" (Issp-dog)



1st Floor, A Walk through Bldg. A ① Bldg. B ② Bldg. C ③ Bldg. K ④ Bldg. D ⑤~⑦ 6F, Bldg. A ⑧ 6F, Bldg. A

Exchange for prizes from quiz rally and questionnaires.



Events

a Guided Tour

Our staff will guide you through the highlights and research sites. If you are interested in talking directly with researchers, enjoying the tour with kids, or need guidance to avoid getting lost inside the buildings, please join our guided tour.

Course A: Strong Magnetic Field, Laser, Supercomputer
 Course B: Magnets, Quantum Materials, Electromagnetic Waves

10/25 (Fri.) 15:00~ approximately 1 hour.
 10/26 (Sat.) 11:00~

Meeting place: Piloty, 1st floor, Bldg. A.
 Please gather at least 5 minutes before the start of each session.

c Introduction to Programming

Observing particle motion with microscopes and programming in Python.

10/25 (Fri.) 10:00~12:00, 14:00~16:30
 10/26 (Sat.) 10:00~12:00, 14:00~16:30
 Experience Time: Approximately 30 minutes

Target: Elementary school students and above, up to 3 groups at a time

Participation Method: Anytime during the above hours
 Place: Bldg. A, 6F, Room 614

b Science Café

"Electrons fly out when exposed to light!?"
 -Experiments inherited from Einstein-

Lecturer: Research Associate, SUZUKI, Takeshi

10/26 (Sat.) 13:30 ~ 14:00
 6F Lounge, Bldg. A

Seeing is believing!
 Let's do an experiment to see how electrons fly out when you shine light on a material. We will also introduce cutting-edge research equipment.

Advance registration required

Challenge the Experimental Exam used in IPhO2023
 Weighing by Kibble Balance

10/25 (Fri.) 10:00~12:00, 14:00~16:00
 10/26 (Sat.) 10:00~12:00, 14:00~16:00
 Experience Time: Approximately 1.5 hours

Target: Junior high school students and above, up to 3 groups per session (1~3 people per group)

Registration form

1 2 Ultra High Magnetic Field Lab.!

Let's visit high magnetic field lab and feel the energy of strong magnetic field.

5 Invisible light!

Don't Try to See! Feel the Electromagnetic Wave.

7 What is the Relationship between Life and Light?

Let's look at the various colored proteins that living things use to emit and receive light!

3 Light and Laser

Let's play with lasers!
 What is the color of the light?

6 Let's play with quantum materials

Let's experience quantum materials with mysterious properties!

7 Travelers in Micro-world -Neutron-

What is neutron?
 What does neutron tell us?

4 Materials Science and Supercomputer

Come and see our supercomputers that support Japan's condensed matter science!

7 Secret of the small magnet

We will consider how to switch the N and S poles of a small magnet while experiencing magnetism and rotation.

8 Exploring New Materials Hidden within Enigmatic Jigsaw Puzzles

Creating Materials from Jigsaw Puzzles!?

Quiz Rally

Try quiz at the exhibitions marked as ★.

You'll get ISSP original "busseiken (ISSP dog)" Periodic Table rolled paper with 4 or more correct stamps, while supplies last.

※The number of rolled paper is limited.



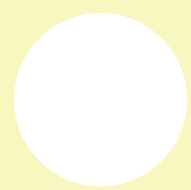
① Bldg. C
 "Ultra High Magnetic Field Lab.!"



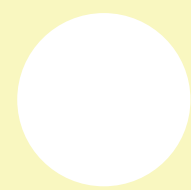
③ Bldg. D
 "Light and Laser"



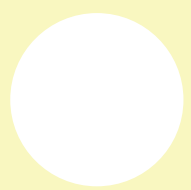
④ 6F, Bldg. A
 "Materials Science and Supercomputer"



⑥ 6F, Bldg. A
 "Let's play with quantum materials"



⑦ 6F, Bldg. A
 "Travelers in Micro-world -Neutron-"



Free Shuttle Bus

To Kashiwa II Campus and Kashiwanoha-campus Station

To Kashiwanoha-campus Station		Kashiwa Campus	To Kashiwa II Campus	
		← 5-7 minutes	→ 5 minutes	
10	35 45 55	<div style="border: 1px solid black; padding: 5px; display: inline-block;">ISSP is here</div>	10	00 15 45
11	05 15 25 35 45 55		11	00 15 45
12	05 15 25 35 45 55		12	00 15 45
13	05 15 25 35 45 55		13	00 15 45
14	05 15 25 35 45 55		14	00 15 45
15	05 15 25 35 45 55		15	00 15 45
16	05 15 25 35 45 55		16	
17	Runs approximately 10 minutes 50		17	

※ Bold times on the timetable indicate that the final bus.

Please share your opinions and feedback with us

Please access QR code and answer questionnaires. You can also answer with PCs on the 6th floor of building A at ISSP. If you need any help, please let our staff know. Answer questions and you'll receive a bag!

※The number of paper bag is limited.

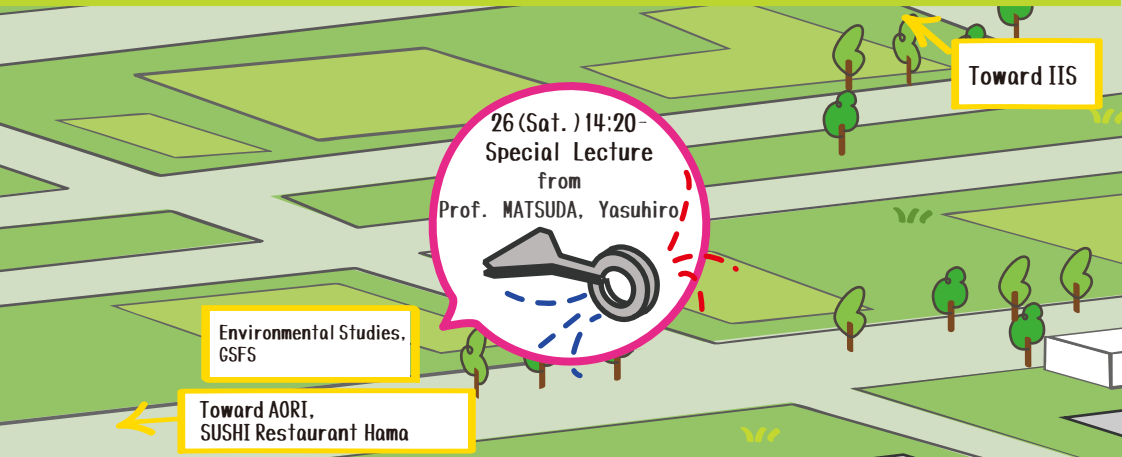
Answer questionnaires and get original Busseiken bag!"



Scan the code



You can get it at the prize exchange booth on the 6th floor, Bldg. A.



X @UTokyo_issp



YouTube @ISSP channel



https://www.issp.u-tokyo.ac.jp/

